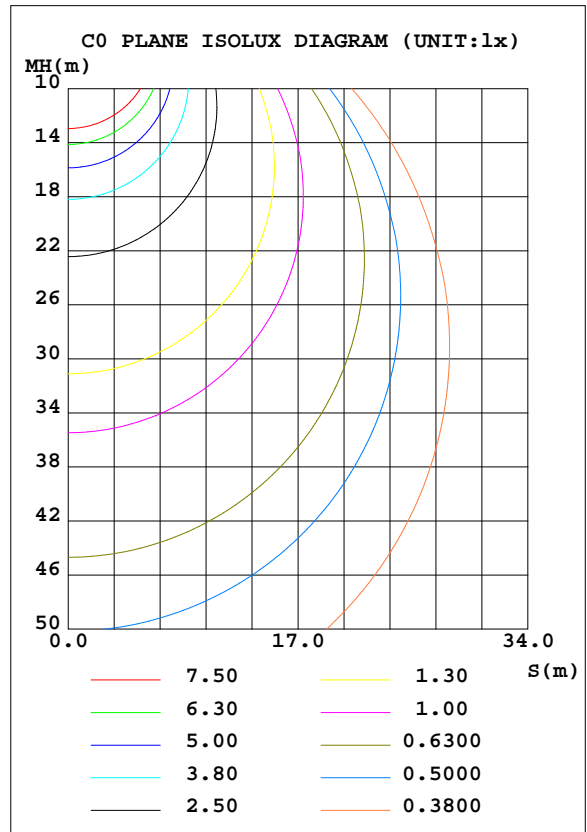
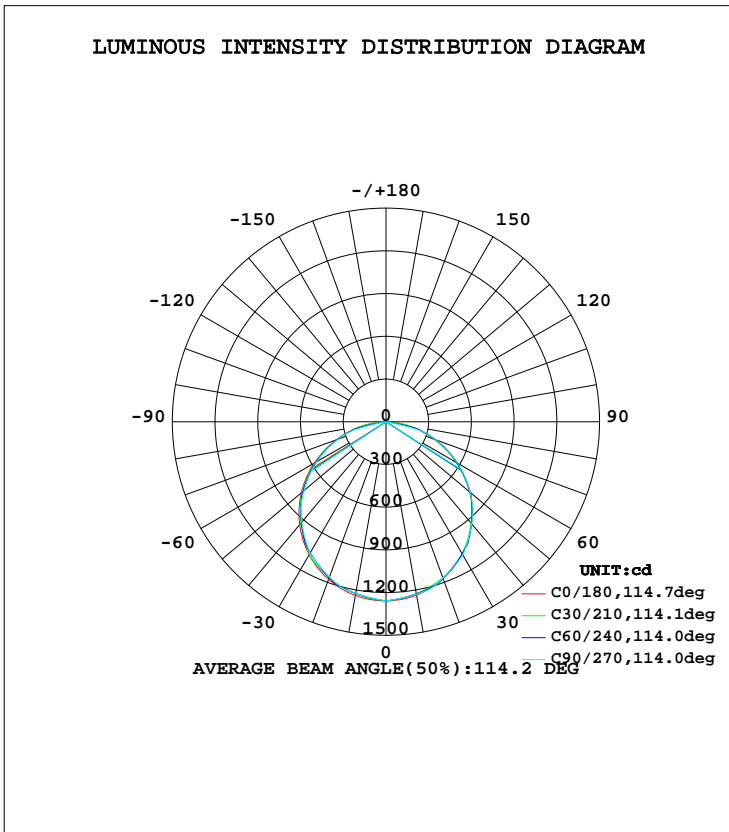


LUMINAIRE PHOTOMETRIC TEST REPORT

Test:U:229.9V I:0.1389A P:31.24W PF:0.9779 Lamp Flux:3619.7lx1 lm		
NAME: IL-PN195 3.000K	TYPE:	WEIGHT:
SPEC.:	DIM.:	SERIAL No.:
MFR.: EVERFINE	SUR.:250*1150	PROTECTION ANGLE:

DATA OF LAMP		PHOTOMETRIC DATA Eff: 115.88 lm/W			
MODEL	IL-PN195 3.000K	Imax(cd)	1258	S/MH(C0/180)	1.27
NOMINAL POWER(W)	30	LOR(%)	100.0	S/MH(C90/270)	1.26
RATED VOLTAGE(V)	230	TOTAL FLUX(lm)	3619.7	η UP, DN(C0-180)	0.0, 50.4
NOMINAL FLUX(lm)	3619.71	CIE CLASS	DIRECT	η UP, DN(C180-360)	0.0, 49.6
LAMPS INSIDE	1	η up(%)	0.0	CIBSE SHR NOM	1.25
TEST VOLTAGE(V)	230	η down(%)	100.0	CIBSE SHR MAX	1.35



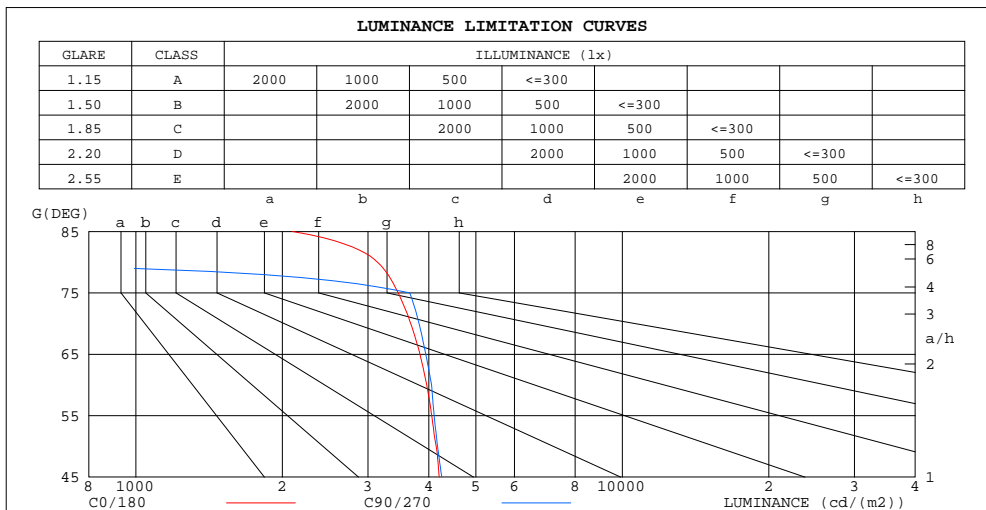
C Range: 0 - 360DEG  
 C Interval: 5.0DEG  
 Test Speed: HIGH  
 Temperature:25.3DEG  
 Operators:DAMIN  
 Test Date:2023-8-8

γ Range: 0 - 90DEG  
 γ Interval: 0.5DEG  
 Test System:EVERFINE GO-2000A\_V1 SYSTEM V2.0.286  
 Humidity:65.0%  
 Test Distance:13.420m [K=1.0000]  
 Remarks: IL-PN195 3.000K

ZONAL FLUX DIAGRAM  
AND LUMINANCE LIMITATION CURVES

ZONAL FLUX DIAGRAM:

$\gamma$	C0	C45	C90	C135	C180	C225	C270	C315	$\gamma$	$\Phi$ zone	$\Phi$ total	#lum,lamp
5	1252	1245	1243	1246	1253	1244	1241	1243	0- 5	29.89	29.89	0.83,0.83
10	1236	1226	1229	1228	1238	1225	1224	1223	5- 10	88.42	118.3	3.27,3.27
15	1210	1202	1214	1206	1213	1201	1207	1197	10- 15	144.2	262.6	7.25,7.25
20	1173	1174	1169	1179	1178	1172	1160	1168	15- 20	195.6	458.2	12.7,12.7
25	1127	1124	1125	1129	1133	1121	1113	1115	20- 25	240.1	698.2	19.3,19.3
30	1072	1066	1080	1072	1079	1063	1067	1056	25- 30	277.0	975.3	26.9,26.9
35	1008	1006	1008	1011	1015	1001	993.4	994.5	30- 35	305.3	1281	35.4,35.4
40	934.9	939.8	936.5	944.6	943.2	933.1	920.2	927.0	35- 40	322.8	1603	44.3,44.3
45	854.3	853.5	864.8	858.4	863.3	846.0	847.0	839.7	40- 45	330.1	1934	53.4,53.4
50	765.5	766.5	770.8	771.5	775.7	758.5	752.1	751.8	45- 50	326.9	2260	62.4,62.4
55	668.9	678.5	676.8	683.6	682.4	669.9	657.3	662.9	50- 55	311.7	2572	71.1,71.1
60	569.5	574.9	582.8	580.0	582.2	566.5	562.4	559.2	55- 60	286.8	2859	79,79
65	466.1	473.4	479.2	478.1	478.4	464.6	459.2	457.5	60- 65	253.0	3112	86,86
70	361.1	371.5	375.7	375.5	371.0	362.4	355.9	355.7	65- 70	211.3	3323	91.8,91.8
75	257.7	268.8	272.1	272.1	267.4	259.8	252.7	253.7	70- 75	164.0	3487	96.3,96.3
80	156.7	146.3	0	148.3	165.7	139.0	0	134.6	75- 80	101.2	3588	99.1,99.1
85	52.57	0	0	0	59.75	0	0	0	80- 85	28.74	3617	99.9,99.9
90	0.6158	0	0	0	0.8326	0	0	0	85- 90	2.694	3620	100,100
95									90- 95			
100									95-100			
105									100-105			
110									105-110			
115									110-115			
120									115-120			
125									120-125			
130									125-130			
135									130-135			
140									135-140			
145									140-145			
150									145-150			
155									150-155			
160									155-160			
165									160-165			
170									165-170			
175									170-175			
180									175-180			
DEG	LUMINOUS INTENSITY:cd									UNIT:lm		



LUMINANCE cd/(m2)		
G(DEG)	C0/180	C90/270
85	2098	0
80	3138	0
75	3463	3657
70	3672	3820
65	3836	3944
60	3961	4054
55	4056	4104
50	4142	4171
45	4203	4254

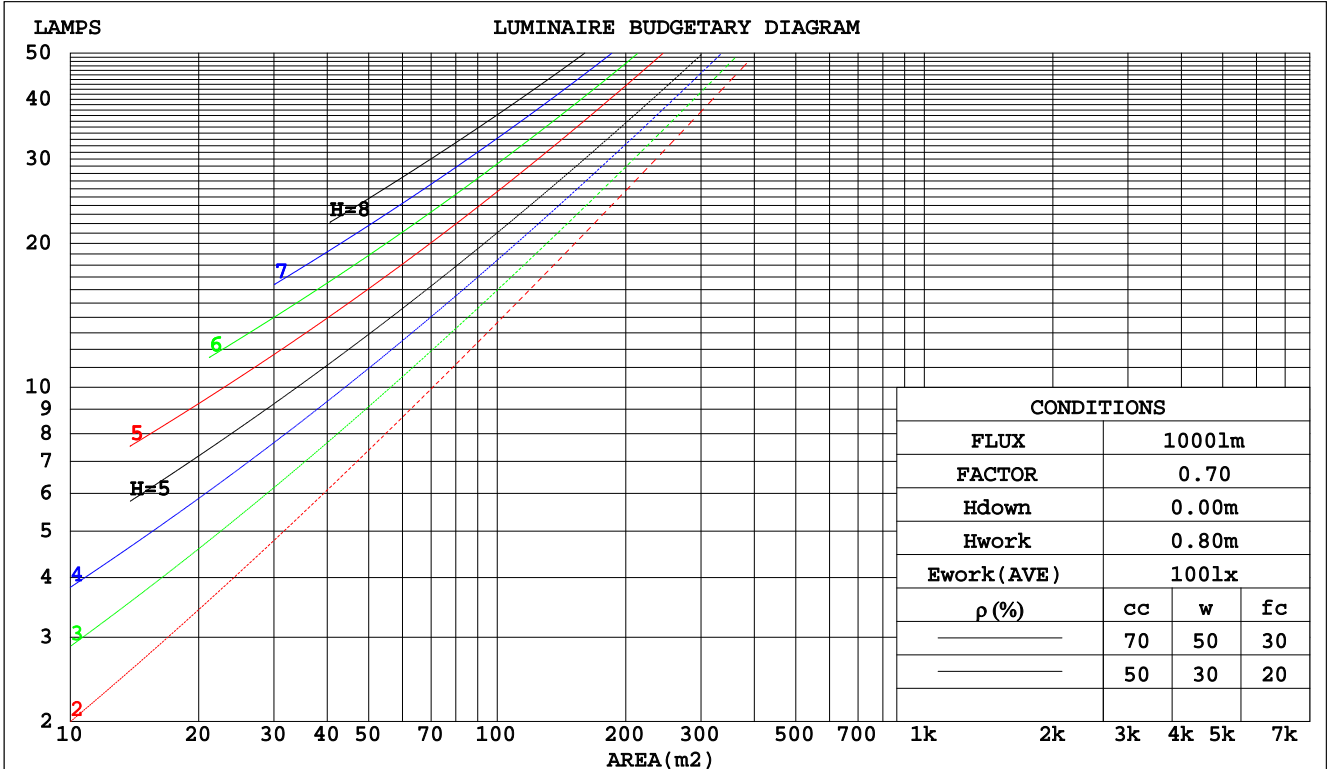
C Range: 0 - 360DEG  
C Interval: 5.0DEG  
Test Speed: HIGH  
Temperature:25.3DEG  
Operators:DAMIN  
Test Date:2023-8-8

$\gamma$  Range: 0 - 90DEG  
 $\gamma$  Interval: 0.5DEG  
Test System:EVERFINE GO-2000A\_V1 SYSTEM V2.0.286  
Humidity:65.0%  
Test Distance:13.420m [K=1.0000]  
Remarks: IL-PN195 3.000K

CU AND LUMINAIRE BUDGETARY ESTIMATE DIAGRAM

Test:U:229.9V I:0.1389A P:31.24W PF:0.9779 Lamp Flux:3619.7lx1 lm		
NAME: IL-PN195 3.000K	TYPE:	WEIGHT:
SPEC.:	DIM.:	SERIAL No.:
MFR.: EVERFINE	SUR.:250*1150	PROTECTION ANGLE:

pcc	80%			70%			50%			30%			10%			0
	50%	30%	10%	50%	30%	10%	50%	30%	10%	50%	30%	10%	50%	30%	10%	0
pw																0
pfc	20%			20%			20%			20%			20%			0
RCR	RCR:Room Cavity Ratio      Coefficients of Utilization(CU)															
0.0	1.19	1.19	1.19	1.16	1.16	1.16	1.11	1.11	1.11	1.06	1.06	1.06	1.02	1.02	1.02	1.00
1.0	1.04	1.00	.96	1.02	.98	.95	.98	.95	.92	.94	.91	.89	.90	.88	.86	.84
2.0	.91	.84	.78	.89	.83	.77	.85	.80	.75	.82	.78	.74	.79	.75	.72	.70
3.0	.79	.71	.65	.78	.70	.64	.75	.68	.63	.72	.67	.62	.70	.65	.61	.59
4.0	.70	.61	.55	.69	.61	.54	.66	.59	.54	.64	.58	.53	.62	.57	.52	.50
5.0	.63	.54	.47	.62	.53	.47	.59	.52	.46	.57	.51	.46	.56	.50	.45	.43
6.0	.56	.47	.41	.55	.47	.41	.54	.46	.40	.52	.45	.40	.50	.44	.40	.38
7.0	.51	.42	.36	.50	.42	.36	.49	.41	.36	.47	.40	.35	.46	.40	.35	.33
8.0	.47	.38	.32	.46	.38	.32	.45	.37	.32	.43	.37	.32	.42	.36	.31	.29
9.0	.43	.34	.29	.42	.34	.29	.41	.34	.29	.40	.33	.28	.39	.33	.28	.26
10.0	.39	.31	.26	.39	.31	.26	.38	.31	.26	.37	.30	.26	.36	.30	.26	.24



C Range: 0 - 360DEG  
 C Interval: 5.0DEG  
 Test Speed: HIGH  
 Temperature:25.3DEG  
 Operators:DAMIN  
 Test Date:2023-8-8

γ Range: 0 - 90DEG  
 γ Interval: 0.5DEG  
 Test System:EVERFINE GO-2000A\_V1 SYSTEM V2.0.286  
 Humidity:65.0%  
 Test Distance:13.420m [K=1.0000]  
 Remarks: IL-PN195 3.000K

WEC AND CCEC

Test:U:229.9V I:0.1389A P:31.24W PF:0.9779 Lamp Flux:3619.71x1 lm		
NAME: IL-PN195 3.000K	TYPE:	WEIGHT:
SPEC.:	DIM.:	SERIAL No.:
MFR.: EVERFINE	SUR.:250*1150	PROTECTION ANGLE:

ρcc	80%			70%			50%			30%			10%			0
ρw	50%	30%	10%	50%	30%	10%	50%	30%	10%	50%	30%	10%	50%	30%	10%	0
ρfc	20%			20%			20%			20%			20%			0
RCR	RCR:Room Cavity Ratio						Wall Exitance Coefficients(WEC)									
0.0																
1.0	.303	.172	.055	.296	.169	.054	.282	.162	.052	.270	.156	.050	.259	.150	.048	
2.0	.289	.159	.049	.283	.156	.048	.271	.151	.047	.261	.146	.046	.251	.142	.045	
3.0	.269	.143	.043	.264	.141	.043	.253	.137	.042	.244	.134	.041	.235	.130	.040	
4.0	.249	.129	.038	.244	.128	.038	.235	.125	.037	.227	.122	.037	.219	.119	.036	
5.0	.231	.117	.034	.226	.116	.034	.218	.114	.033	.210	.111	.033	.203	.109	.033	
6.0	.214	.107	.031	.210	.106	.031	.203	.104	.030	.196	.102	.030	.190	.100	.030	
7.0	.199	.098	.028	.196	.098	.028	.189	.096	.028	.183	.094	.027	.177	.092	.027	
8.0	.186	.091	.026	.183	.090	.025	.177	.089	.025	.172	.087	.025	.167	.086	.025	
9.0	.174	.084	.024	.172	.084	.023	.166	.082	.023	.161	.081	.023	.157	.080	.023	
10.0	.164	.079	.022	.161	.078	.022	.157	.077	.022	.152	.076	.022	.148	.075	.021	

ρcc	80%			70%			50%			30%			10%			0
ρw	50%	30%	10%	50%	30%	10%	50%	30%	10%	50%	30%	10%	50%	30%	10%	0
ρfc	20%			20%			20%			20%			20%			0
RCR	RCR:Room Cavity Ratio						Ceiling Cavity Exitance Coefficients(CCEC)									
0.0	.190	.190	.190	.163	.163	.163	.111	.111	.111	.064	.064	.064	.020	.020	.020	
1.0	.180	.156	.135	.154	.134	.116	.105	.092	.080	.061	.053	.047	.019	.017	.015	
2.0	.172	.132	.098	.147	.114	.085	.101	.079	.059	.058	.046	.035	.019	.015	.011	
3.0	.164	.114	.074	.141	.099	.065	.097	.068	.045	.056	.040	.027	.018	.013	.009	
4.0	.157	.101	.058	.135	.087	.051	.093	.061	.036	.054	.036	.021	.017	.012	.007	
5.0	.149	.091	.047	.128	.078	.041	.088	.055	.029	.051	.032	.017	.017	.010	.006	
6.0	.142	.082	.039	.122	.071	.034	.084	.050	.024	.049	.029	.014	.016	.010	.005	
7.0	.136	.075	.033	.117	.065	.029	.081	.046	.020	.047	.027	.012	.015	.009	.004	
8.0	.129	.070	.029	.111	.060	.025	.077	.042	.018	.045	.025	.011	.014	.008	.003	
9.0	.123	.065	.025	.106	.056	.022	.073	.039	.016	.043	.023	.009	.014	.008	.003	
10.0	.117	.060	.022	.101	.052	.020	.070	.037	.014	.041	.022	.008	.013	.007	.003	

C Range: 0 - 360DEG  
 C Interval: 5.0DEG  
 Test Speed: HIGH  
 Temperature:25.3DEG  
 Operators:DAMIN  
 Test Date:2023-8-8

γ Range: 0 - 90DEG  
 γ Interval: 0.5DEG  
 Test System:EVERFINE GO-2000A\_V1 SYSTEM V2.0.286  
 Humidity:65.0%  
 Test Distance:13.420m [K=1.0000]  
 Remarks: IL-PN195 3.000K

UGR(Unified Glare Rating) Table

Test:U:229.9V I:0.1389A P:31.24W PF:0.9779 Lamp Flux:3619.7lx1 lm										
NAME: IL-PN195 3.000K					TYPE:			WEIGHT:		
SPEC.:					DIM.:			SERIAL No.:		
MFR.: EVERFINE					SUR.:250*1150			PROTECTION ANGLE:		
ceiling/cavity	0.7	0.7	0.5	0.5	0.3	0.7	0.7	0.5	0.5	0.3
walls	0.5	0.3	0.5	0.3	0.3	0.5	0.3	0.5	0.3	0.3
working plane	0.2	0.2	0.2	0.2	0.2	0.2	0.2	0.2	0.2	0.2
Room dimensions	Viewed crosswise					Viewed endwise				
x = 2H y = 2H	17.8	19.3	18.1	19.5	19.7	17.9	19.4	18.2	19.6	19.8
3H	19.4	20.8	19.7	21.0	21.3	19.5	20.9	19.8	21.2	21.4
4H	20.0	21.4	20.3	21.6	21.9	20.2	21.5	20.5	21.8	22.0
6H	20.5	21.7	20.8	22.0	22.3	20.3	21.5	20.6	21.8	22.1
8H	20.6	21.8	21.0	22.1	22.4	20.2	21.4	20.6	21.7	22.0
12H	20.7	21.8	21.0	22.1	22.4	20.2	21.3	20.5	21.6	21.9
4H 2H	18.5	19.8	18.8	20.1	20.3	18.5	19.9	18.9	20.1	20.4
3H	20.2	21.4	20.6	21.7	22.0	20.4	21.5	20.7	21.8	22.1
4H	21.0	22.1	21.4	22.4	22.7	21.2	22.2	21.5	22.5	22.9
6H	21.6	22.6	22.0	22.9	23.3	21.3	22.2	21.7	22.6	22.9
8H	21.8	22.7	22.2	23.0	23.4	21.2	22.1	21.6	22.5	22.9
12H	21.9	22.7	22.3	23.1	23.5	21.2	22.0	21.6	22.4	22.8
8H 4H	21.3	22.2	21.7	22.6	23.0	21.5	22.3	21.9	22.7	23.1
6H	22.1	22.8	22.5	23.2	23.7	21.6	22.4	22.1	22.8	23.2
8H	22.4	23.0	22.8	23.4	23.9	21.6	22.2	22.1	22.7	23.1
12H	22.6	23.1	23.0	23.6	24.0	21.6	22.1	22.0	22.6	23.0
12H 4H	21.3	22.1	21.7	22.5	22.9	21.5	22.3	21.9	22.7	23.1
6H	22.1	22.7	22.5	23.2	23.6	21.7	22.3	22.1	22.7	23.2
8H	22.4	22.9	22.9	23.4	23.9	21.6	22.2	22.1	22.6	23.1
Variations with the observer position at spacings:										
S = 1.0H	+ 0.1 / - 0.2					+ 0.2 / - 0.2				
1.5H	+ 0.2 / - 0.3					+ 0.1 / - 0.2				
2.0H	+ 0.2 / - 0.3					+ 0.2 / - 0.4				

CIE Pub.117 Corrected 3620 lm Total Lamp Luminous Flux.(8log(F/F0) = 4.5)

C Range: 0 - 360DEG  
 C Interval: 5.0DEG  
 Test Speed: HIGH  
 Temperature:25.3DEG  
 Operators:DAMIN  
 Test Date:2023-8-8

γ Range: 0 - 90DEG  
 γ Interval: 0.5DEG  
 Test System:EVERFINE GO-2000A\_V1 SYSTEM V2.0.286  
 Humidity:65.0%  
 Test Distance:13.420m [K=1.0000]  
 Remarks: IL-PN195 3.000K

UTILIZATION FACTORS TABLE

Test:U:229.9V I:0.1389A P:31.24W PF:0.9779 Lamp Flux:3619.7lx1 lm		
NAME: IL-PN195 3.000K	TYPE:	WEIGHT:
SPEC.:	DIM.:	SERIAL No.:
MFR.: EVERFINE	SUR.:250*1150	PROTECTION ANGLE:

REFLECTANCE										
Ceiling	0.8	0.8	0.8	0.7	0.7	0.7	0.5	0.5	0.5	0
Walls	0.7	0.5	0.3	0.7	0.5	0.3	0.7	0.5	0.3	0
Working plane	0.2	0.2	0.2	0.2	0.2	0.2	0.2	0.2	0.2	0
ROOM INDEX	UTILIZATION FACTORS(PERCENT) $k(RI) \times RCR = 5$									
k = 0.60	57	46	39	57	45	39	55	45	38	32
0.80	67	56	48	66	55	48	65	55	48	41
1.00	76	65	57	75	64	57	72	66	57	49
1.25	83	73	65	82	72	65	79	70	64	57
1.50	88	78	71	86	77	71	83	76	70	62
2.00	95	87	80	93	85	79	90	83	78	70
2.50	99	91	85	97	90	84	93	87	83	74
3.00	102	96	90	100	94	89	96	91	87	79
4.00	107	101	96	104	99	95	100	96	92	83
5.00	109	104	100	107	102	99	102	99	96	87
ROOM INDEX	UF(total)									Direct
According to DIN EN 13032-2 2004			Suspended				SHRNOM = 1.25			

C Range: 0 - 360DEG  
 C Interval: 5.0DEG  
 Test Speed: HIGH  
 Temperature:25.3DEG  
 Operators:DAMIN  
 Test Date:2023-8-8

$\gamma$  Range: 0 - 90DEG  
 $\gamma$  Interval: 0.5DEG  
 Test System:EVERFINE GO-2000A\_V1 SYSTEM V2.0.286  
 Humidity:65.0%  
 Test Distance:13.420m [K=1.0000]  
 Remarks: IL-PN195 3.000K

ISOCANDELA DIAGRAM

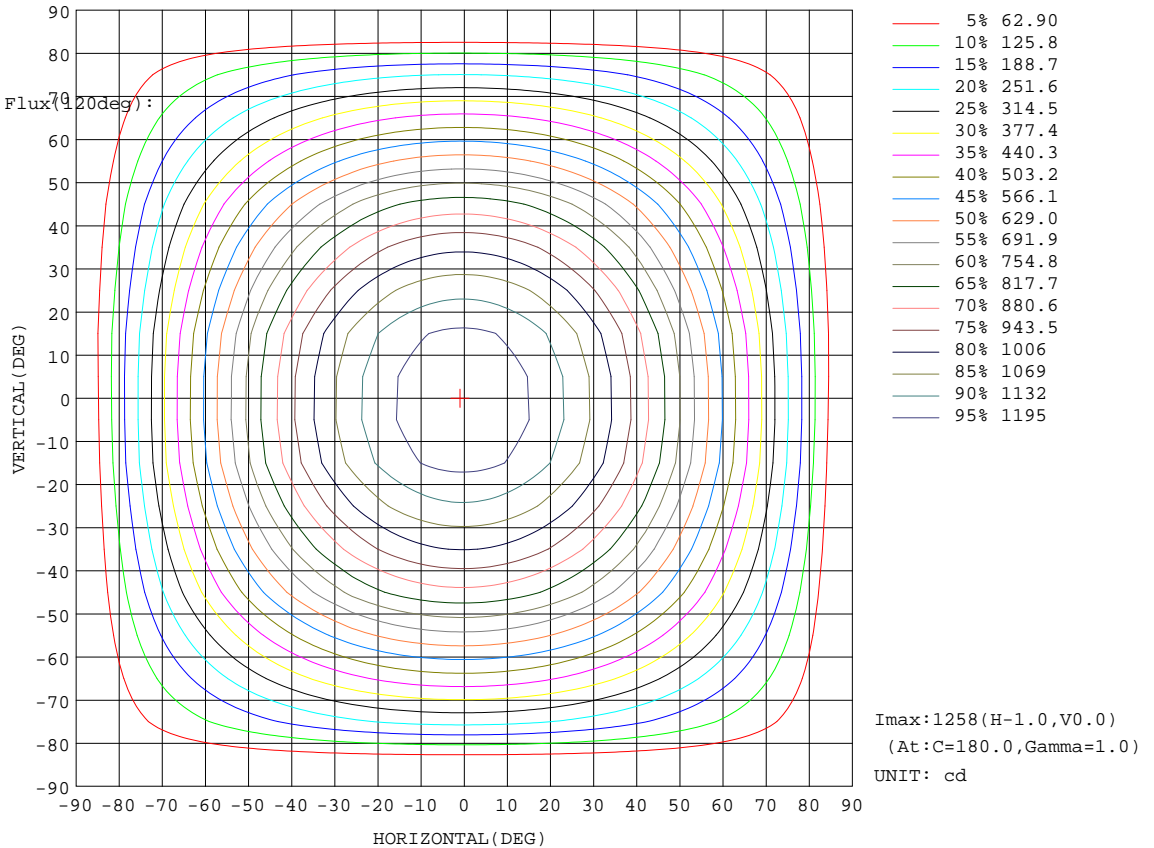
Test:U:229.9V I:0.1389A P:31.24W PF:0.9779 Lamp Flux:3619.71x1 lm		
NAME: IL-PN195 3.000K	TYPE:	WEIGHT:
SPEC.:	DIM.:	SERIAL No.:
MFR.: EVERFINE	SUR.:250*1150	PROTECTION ANGLE:

Conical surface Flux(90deg):

1933.5 lm  
%lum = 53.4%  
%lamp = 53.4%

Conical surface Flux(70deg):

2858.9 lm  
%lum = 79.0%  
%lamp = 79.0%

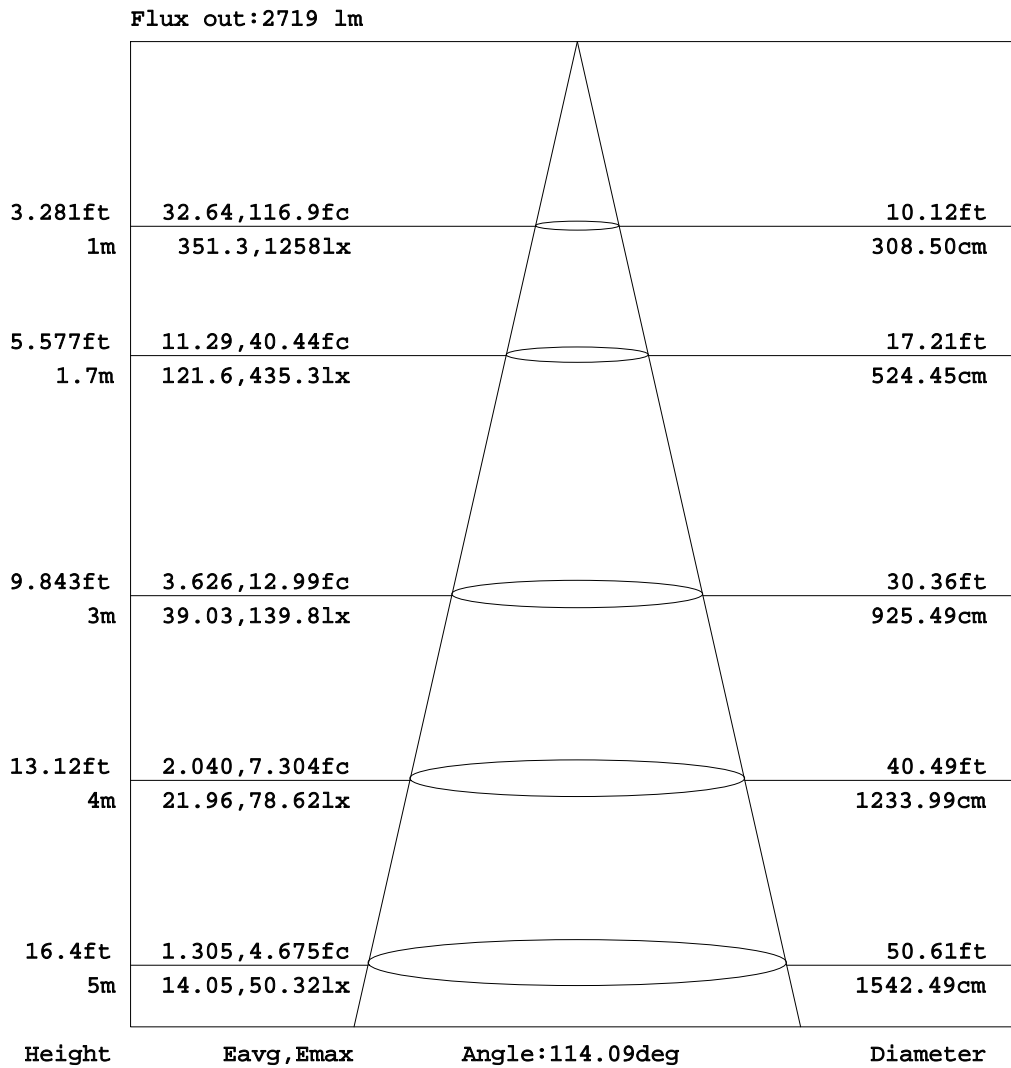


C Range: 0 - 360DEG  
C Interval: 5.0DEG  
Test Speed: HIGH  
Temperature:25.3DEG  
Operators:DAMIN  
Test Date:2023-8-8

γ Range: 0 - 90DEG  
γ Interval: 0.5DEG  
Test System:EVERFINE GO-2000A\_V1 SYSTEM V2.0.286  
Humidity:65.0%  
Test Distance:13.420m [K=1.0000]  
Remarks: IL-PN195 3.000K

AAI Figure

Test:U:229.9V I:0.1389A P:31.24W PF:0.9779 Lamp Flux:3619.7lx1 lm		
NAME: IL-PN195 3.000K	TYPE:	WEIGHT:
SPEC.:	DIM.:	SERIAL No.:
MFR.: EVERFINE	SUR.:250*1150	PROTECTION ANGLE:



Note:The Curves indicate the illuminated area and the average illumination when the luminaire is at different distance.

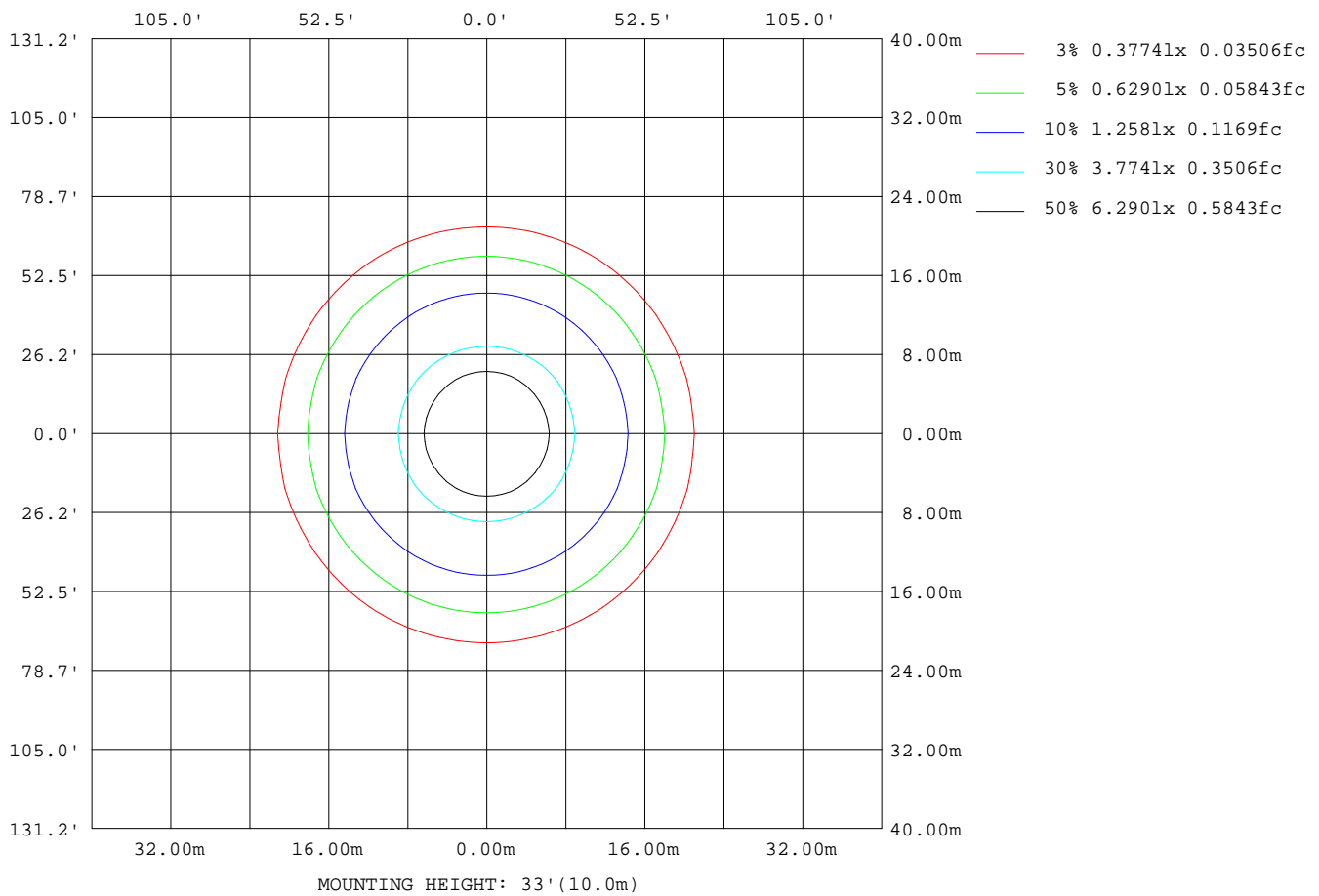
C Range: 0 - 360DEG  
 C Interval: 5.0DEG  
 Test Speed: HIGH  
 Temperature:25.3DEG  
 Operators:DAMIN  
 Test Date:2023-8-8

γ Range: 0 - 90DEG  
 γ Interval: 0.5DEG  
 Test System:EVERFINE GO-2000A\_V1 SYSTEM V2.0.286  
 Humidity:65.0%  
 Test Distance:13.420m [K=1.0000]  
 Remarks: IL-PN195 3.000K



**ISOLUX DIAGRAM**

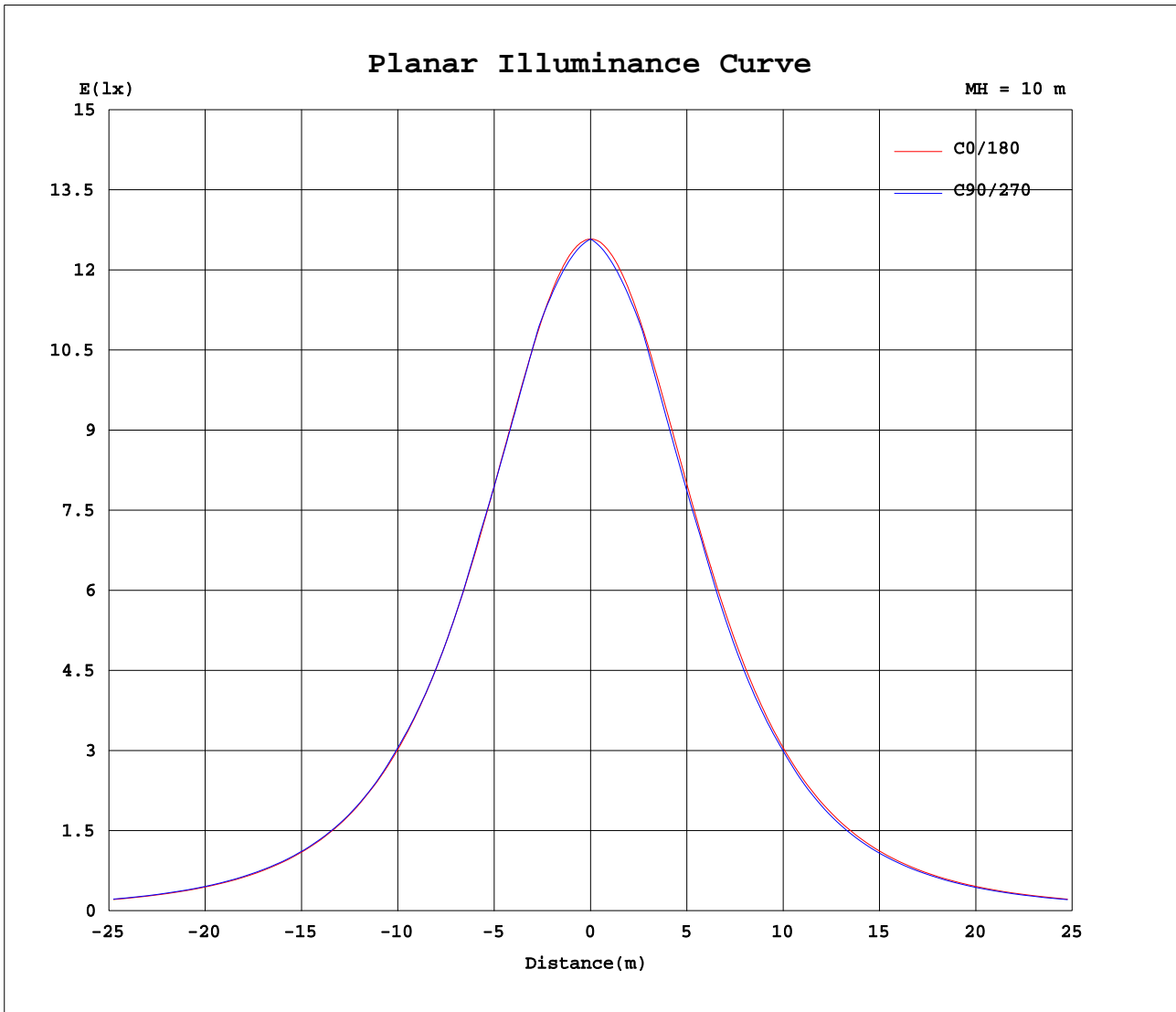
Test:U:229.9V I:0.1389A P:31.24W PF:0.9779 Lamp Flux:3619.7lx1 lm		
NAME: IL-PN195 3.000K	TYPE:	WEIGHT:
SPEC.:	DIM.:	SERIAL No.:
MFR.: EVERFINE	SUR.:250*1150	PROTECTION ANGLE:



C Range: 0 - 360DEG  
 C Interval: 5.0DEG  
 Test Speed: HIGH  
 Temperature:25.3DEG  
 Operators:DAMIN  
 Test Date:2023-8-8

$\gamma$  Range: 0 - 90DEG  
 $\gamma$  Interval: 0.5DEG  
 Test System:EVERFINE GO-2000A\_V1 SYSTEM V2.0.286  
 Humidity:65.0%  
 Test Distance:13.420m [K=1.0000]  
 Remarks: IL-PN195 3.000K

Planar Illuminance Curve



C Range: 0 - 360DEG  
 C Interval: 5.0DEG  
 Test Speed: HIGH  
 Temperature: 25.3DEG  
 Operators: DAMIN  
 Test Date: 2023-8-8

γ Range: 0 - 90DEG  
 γ Interval: 0.5DEG  
 Test System: EVERFINE GO-2000A\_V1 SYSTEM V2.0.286  
 Humidity: 65.0%  
 Test Distance: 13.420m [K=1.0000]  
 Remarks: IL-PN195 3.000K

LUMINOUS DISTRIBUTION INTENSITY DATA

Test:U:229.9V I:0.1389A P:31.24W PF:0.9779 Lamp Flux:3619.71x1 lm		
NAME: IL-PN195 3.000K	TYPE:	WEIGHT:
SPEC.:	DIM.:	SERIAL No.:
MFR.: EVERFINE	SUR.:250*1150	PROTECTION ANGLE:

Table--1

UNIT: cd

C( DEG) γ (DEG)	0	5	10	15	20	25	30	35	40	45	50	55	60	65	70	75	80	85	90
0	1258	1258	1258	1258	1258	1258	1258	1258	1258	1258	1258	1258	1258	1258	1258	1258	1258	1258	1258
5	1252	1251	1250	1249	1248	1247	1246	1246	1245	1245	1244	1244	1244	1243	1243	1243	1243	1243	1243
10	1236	1234	1232	1230	1228	1227	1227	1226	1226	1226	1226	1227	1227	1227	1228	1228	1228	1229	1229
15	1210	1206	1203	1201	1200	1200	1200	1200	1201	1202	1204	1206	1208	1209	1211	1212	1213	1214	1214
20	1173	1169	1166	1164	1163	1164	1166	1168	1171	1174	1175	1173	1171	1170	1170	1170	1169	1169	1169
25	1127	1122	1119	1118	1118	1121	1124	1129	1126	1124	1122	1122	1122	1122	1123	1123	1124	1124	1125
30	1072	1066	1063	1063	1066	1070	1072	1068	1066	1066	1067	1069	1071	1073	1075	1077	1079	1080	1080
35	1008	1001	999	1000	1005	1006	1003	1002	1003	1006	1010	1014	1012	1010	1009	1008	1008	1008	1008
40	935	928	927	930	934	930	930	932	937	940	937	935	934	934	934	935	936	936	937
45	854	847	847	854	850	850	853	860	856	854	853	854	855	857	859	861	863	864	865
50	766	759	762	763	760	764	772	767	765	766	769	773	773	772	771	770	770	770	771
55	669	664	670	667	668	673	670	672	675	679	676	675	675	675	675	675	676	676	677
60	569	565	570	568	574	570	572	578	576	575	575	576	577	578	579	581	582	582	583
65	466	463	465	469	467	470	472	471	472	473	475	477	478	478	478	478	479	479	479
70	361	360	361	362	364	366	367	369	371	372	372	373	374	374	374	375	375	375	376
75	258	256	258	260	261	264	266	267	268	269	270	270	271	271	271	272	272	272	272
80	157	152	155	160	164	166	167	168	169	146	119	92.7	69.4	49.0	31.7	18.0	8.07	2.03	0.00
85	52.6	52.5	63.8	70.3	67.0	33.6	0.00	0.00	0.00	0.00	0.00	0.00	0.00	0.00	0.00	0.00	0.00	0.00	0.00
90	0.62	0.00	0.00	0.00	0.00	0.00	0.00	0.00	0.00	0.00	0.00	0.00	0.00	0.00	0.00	0.00	0.00	0.00	0.00

C Range: 0 - 360DEG  
 C Interval: 5.0DEG  
 Test Speed: HIGH  
 Temperature:25.3DEG  
 Operators:DAMIN  
 Test Date:2023-8-8

γ Range: 0 - 90DEG  
 γ Interval: 0.5DEG  
 Test System:EVERFINE GO-2000A\_V1 SYSTEM V2.0.286  
 Humidity:65.0%  
 Test Distance:13.420m [K=1.0000]  
 Remarks: IL-PN195 3.000K

LUMINOUS DISTRIBUTION INTENSITY DATA

Test:U:229.9V I:0.1389A P:31.24W PF:0.9779 Lamp Flux:3619.7lx1 lm		
NAME: IL-PN195 3.000K	TYPE:	WEIGHT:
SPEC.:	DIM.:	SERIAL No.:
MFR.: EVERFINE	SUR.:250*1150	PROTECTION ANGLE:

Table--2

UNIT: cd

C( DEG) γ (DEG)	95	100	105	110	115	120	125	130	135	140	145	150	155	160	165	170	175	180	185
0	1258	1258	1258	1258	1258	1258	1258	1258	1258	1258	1258	1258	1258	1258	1258	1258	1258	1258	1258
5	1243	1244	1244	1244	1244	1245	1245	1245	1246	1246	1247	1247	1248	1249	1250	1251	1252	1253	1252
10	1229	1229	1229	1229	1229	1228	1228	1228	1228	1228	1229	1229	1230	1231	1232	1234	1236	1238	1236
15	1214	1214	1213	1212	1211	1210	1209	1207	1206	1205	1204	1203	1203	1204	1205	1207	1210	1213	1209
20	1170	1170	1171	1172	1173	1174	1176	1179	1179	1176	1173	1171	1169	1169	1169	1171	1174	1178	1173
25	1125	1125	1125	1125	1125	1125	1126	1127	1129	1132	1136	1131	1127	1125	1124	1125	1128	1133	1127
30	1080	1080	1078	1077	1075	1074	1073	1072	1072	1073	1075	1079	1079	1074	1071	1070	1073	1079	1072
35	1009	1009	1010	1011	1013	1015	1018	1014	1011	1009	1009	1011	1016	1015	1010	1008	1009	1015	1008
40	937	937	937	937	937	938	939	941	945	943	939	938	939	945	941	937	937	943	936
45	865	865	864	863	861	860	859	858	858	862	866	861	859	861	866	859	857	863	856
50	771	772	773	774	776	778	779	773	771	771	773	777	774	772	777	773	770	776	768
55	677	677	677	678	678	679	679	681	684	681	678	679	683	679	678	681	676	682	674
60	583	583	582	582	581	581	580	579	580	582	585	580	580	584	579	581	577	582	575
65	479	480	480	480	480	481	481	480	478	477	477	479	478	476	479	475	475	478	473
70	376	376	376	376	376	376	376	376	376	375	373	372	373	373	371	370	372	371	370
75	272	273	273	273	273	273	273	273	272	271	271	270	269	268	269	266	267	267	266
80	2.03	8.10	18.1	32.0	49.4	70.1	93.8	120	148	171	171	171	170	169	166	163	160	166	164
85	0.00	0.00	0.00	0.00	0.00	0.00	0.00	0.00	0.00	0.00	0.00	0.00	34.7	70.1	74.2	68.5	59.5	59.7	64.9
90	0.00	0.00	0.00	0.00	0.00	0.00	0.00	0.00	0.00	0.00	0.00	0.00	0.00	0.00	0.00	0.00	0.00	0.83	0.00

C Range: 0 - 360DEG  
 C Interval: 5.0DEG  
 Test Speed: HIGH  
 Temperature:25.3DEG  
 Operators:DAMIN  
 Test Date:2023-8-8

γ Range: 0 - 90DEG  
 γ Interval: 0.5DEG  
 Test System:EVERFINE GO-2000A\_V1 SYSTEM V2.0.286  
 Humidity:65.0%  
 Test Distance:13.420m [K=1.0000]  
 Remarks: IL-PN195 3.000K

LUMINOUS DISTRIBUTION INTENSITY DATA

Test:U:229.9V I:0.1389A P:31.24W PF:0.9779 Lamp Flux:3619.71x1 lm		
NAME: IL-PN195 3.000K	TYPE:	WEIGHT:
SPEC.:	DIM.:	SERIAL No.:
MFR.: EVERFINE	SUR.:250*1150	PROTECTION ANGLE:

Table--3

UNIT: cd

C( DEG) γ (DEG)	190	195	200	205	210	215	220	225	230	235	240	245	250	255	260	265	270	275	280
0	1258	1258	1258	1258	1258	1258	1258	1258	1258	1258	1258	1258	1258	1258	1258	1258	1258	1258	1258
5	1251	1249	1248	1247	1246	1245	1245	1244	1243	1243	1242	1242	1242	1241	1241	1241	1241	1241	1241
10	1233	1231	1229	1228	1227	1226	1225	1225	1224	1224	1224	1224	1224	1224	1224	1224	1224	1224	1224
15	1206	1204	1202	1200	1200	1200	1200	1201	1202	1203	1204	1205	1206	1206	1207	1207	1207	1206	1206
20	1169	1167	1166	1165	1166	1168	1170	1172	1172	1169	1166	1164	1163	1162	1161	1161	1160	1160	1160
25	1123	1121	1121	1123	1126	1130	1125	1121	1118	1117	1115	1115	1114	1114	1114	1114	1113	1113	1113
30	1068	1067	1069	1073	1073	1068	1064	1063	1062	1062	1063	1064	1065	1066	1067	1067	1067	1066	1065
35	1005	1006	1010	1010	1003	1001	1000	1001	1003	1006	1002	1000	997	996	995	994	993	993	993
40	934	937	939	933	930	930	932	933	929	926	924	923	922	921	921	921	920	920	919
45	855	861	855	851	852	856	850	846	844	845	845	846	847	847	847	847	847	846	845
50	770	772	766	766	768	762	759	759	759	762	763	759	757	755	754	753	752	752	752
55	678	672	672	675	669	667	668	670	666	663	663	661	660	659	658	658	657	657	657
60	578	573	577	571	571	574	569	567	565	564	564	564	563	563	563	563	562	562	561
65	472	474	470	470	470	467	465	465	465	465	464	463	462	461	460	460	459	459	459
70	367	366	367	365	363	363	363	362	362	361	360	359	359	358	357	356	356	356	355
75	264	265	262	262	262	261	260	260	259	258	257	256	256	255	254	253	253	252	252
80	165	163	164	163	163	162	161	139	112	87.6	65.4	46.0	29.8	16.9	7.53	1.89	0.00	1.88	7.48
85	65.7	70.2	65.5	32.6	0.00	0.00	0.00	0.00	0.00	0.00	0.00	0.00	0.00	0.00	0.00	0.00	0.00	0.00	0.00
90	0.00	0.00	0.00	0.00	0.00	0.00	0.00	0.00	0.00	0.00	0.00	0.00	0.00	0.00	0.00	0.00	0.00	0.00	0.00

C Range: 0 - 360DEG  
 C Interval: 5.0DEG  
 Test Speed: HIGH  
 Temperature:25.3DEG  
 Operators:DAMIN  
 Test Date:2023-8-8

γ Range: 0 - 90DEG  
 γ Interval: 0.5DEG  
 Test System:EVERFINE GO-2000A\_V1 SYSTEM V2.0.286  
 Humidity:65.0%  
 Test Distance:13.420m [K=1.0000]  
 Remarks: IL-PN195 3.000K

LUMINOUS DISTRIBUTION INTENSITY DATA

Test:U:229.9V I:0.1389A P:31.24W PF:0.9779 Lamp Flux:3619.7lx1 lm		
NAME: IL-PN195 3.000K	TYPE:	WEIGHT:
SPEC.:	DIM.:	SERIAL No.:
MFR.: EVERFINE	SUR.:250*1150	PROTECTION ANGLE:

Table--4

UNIT: cd

C( DEG) γ (DEG)	285	290	295	300	305	310	315	320	325	330	335	340	345	350	355				
0	1258	1258	1258	1258	1258	1258	1258	1258	1258	1258	1258	1258	1258	1258	1258				
5	1241	1241	1241	1242	1242	1242	1243	1243	1244	1245	1246	1247	1248	1249	1251				
10	1223	1223	1223	1223	1222	1223	1223	1223	1223	1224	1225	1227	1229	1231	1233				
15	1205	1204	1203	1201	1200	1198	1197	1197	1196	1196	1197	1198	1200	1202	1205				
20	1160	1161	1162	1163	1165	1168	1168	1165	1162	1161	1160	1160	1161	1164	1168				
25	1112	1112	1112	1112	1112	1113	1115	1118	1123	1118	1116	1114	1114	1117	1121				
30	1064	1062	1060	1059	1057	1056	1056	1057	1060	1064	1064	1060	1059	1060	1065				
35	994	994	996	998	1001	997	994	993	993	995	999	999	996	996	1000				
40	919	919	919	919	920	923	927	925	922	920	922	927	925	923	926				
45	844	842	841	839	838	838	840	843	848	843	841	843	848	844	845				
50	752	753	754	756	756	754	752	752	754	759	754	753	757	758	757				
55	656	656	656	657	658	660	663	660	658	658	663	660	660	665	661				
60	561	560	559	558	558	558	559	561	564	560	560	565	561	565	563				
65	458	458	458	459	459	458	457	457	458	461	460	458	462	460	461				
70	355	355	355	355	355	356	356	356	355	355	356	356	355	356	357				
75	252	252	253	253	253	253	254	254	254	254	253	253	254	254	254				
80	16.7	29.4	45.3	64.1	85.6	109	135	155	156	157	157	156	154	155	155				
85	0.00	0.00	0.00	0.00	0.00	0.00	0.00	0.00	0.00	0.00	0.00	30.5	60.3	64.3	59.8	56.5			
90	0.00	0.00	0.00	0.00	0.00	0.00	0.00	0.00	0.00	0.00	0.00	0.00	0.00	0.00	0.00				

C Range: 0 - 360DEG  
 C Interval: 5.0DEG  
 Test Speed: HIGH  
 Temperature:25.3DEG  
 Operators:DAMIN  
 Test Date:2023-8-8

γ Range: 0 - 90DEG  
 γ Interval: 0.5DEG  
 Test System:EVERFINE GO-2000A\_V1 SYSTEM V2.0.286  
 Humidity:65.0%  
 Test Distance:13.420m [K=1.0000]  
 Remarks: IL-PN195 3.000K

Photometric Data Table [cd]

G/C	0.0	5.0	10.0	15.0	20.0	25.0	30.0	35.0	40.0	45.0
0.0	1258	1258	1258	1258	1258	1258	1258	1258	1258	1258
2.5	1256	1256	1255	1254	1254	1253	1253	1253	1252	1252
5.0	1252	1251	1250	1249	1248	1247	1246	1246	1245	1245
7.5	1245	1244	1242	1241	1239	1238	1238	1237	1236	1236
10.0	1236	1234	1232	1232	1230	1228	1227	1226	1226	1226
12.5	1224	1221	1219	1217	1215	1214	1214	1214	1214	1215
15.0	1210	1206	1203	1201	1200	1200	1200	1200	1201	1202
17.5	1193	1189	1186	1184	1183	1183	1184	1185	1187	1189
20.0	1173	1169	1166	1164	1163	1164	1166	1168	1171	1174
22.5	1151	1146	1143	1142	1142	1143	1146	1149	1154	1151
25.0	1127	1122	1119	1118	1118	1121	1124	1129	1126	1124
27.5	1101	1095	1092	1091	1093	1097	1102	1099	1097	1095
30.0	1072	1066	1063	1063	1066	1070	1072	1068	1066	1066
32.5	1041	1035	1032	1033	1036	1042	1038	1036	1035	1036
35.0	1008	1001	998.7	1000	1005	1006	1003	1002	1003	1006
37.5	972.2	965.4	963.5	966.4	972.9	968.9	966.9	967.5	970.4	974.7
40.0	934.9	927.9	926.5	930.1	934.1	930.3	929.7	932.3	936.9	939.8
42.5	895.6	888.5	887.6	892.7	892.7	890.2	891.9	896.3	900.5	896.8
45.0	854.3	847.2	847.2	853.8	850.3	849.7	853.1	859.9	855.9	853.5
47.5	811.6	804.3	805.1	810.3	805.8	809.0	814.1	813.8	810.7	810.1
50.0	765.5	759.0	761.6	763.3	760.3	764.4	771.8	766.6	765.4	766.5
52.5	716.8	711.2	715.9	715.5	714.6	720.2	720.7	719.2	719.9	723.0
55.0	668.9	663.7	669.9	666.8	668.4	672.9	669.8	672.5	674.5	678.5
57.5	619.8	615.0	622.2	617.5	621.9	621.5	620.9	624.5	628.5	626.4
60.0	569.5	565.3	569.9	567.9	573.5	570.3	572.3	577.6	575.9	574.9
62.5	518.2	514.5	517.4	518.2	520.0	519.8	524.2	524.4	523.7	523.9
65.0	466.1	463.5	464.6	469.0	467.2	470.0	472.3	471.4	472.0	473.4
67.5	413.7	412.3	412.4	416.1	414.9	420.3	418.9	419.5	421.2	423.6
70.0	361.1	359.9	360.8	362.0	364.3	366.0	366.6	368.6	370.9	371.5
72.5	309.1	308.8	310.9	309.9	312.7	313.5	315.9	318.0	319.0	319.8
75.0	257.7	256.1	258.4	260.0	261.1	263.5	265.7	266.9	267.9	268.8
77.5	207.1	204.2	205.5	208.8	212.0	214.5	215.8	217.0	217.8	218.5
80.0	156.7	151.9	155.3	160.0	164.1	166.1	167.4	168.1	168.6	146.3
82.5	104.4	99.82	106.7	113.9	117.5	119.4	116.5	83.63	51.20	19.83
85.0	52.57	52.50	63.83	70.32	67.00	33.63	0	0	0	0
87.5	10.32	18.89	23.69	0	0	0	0	0	0	0
90.0	0.6158	0	0	0	0	0	0	0	0	0
G/C	50.0	55.0	60.0	65.0	70.0	75.0	80.0	85.0	90.0	95.0
0.0	1258	1258	1258	1258	1258	1258	1258	1258	1258	1258
2.5	1252	1251	1251	1251	1251	1251	1251	1251	1251	1251
5.0	1244	1244	1244	1243	1243	1243	1243	1243	1243	1243
7.5	1236	1236	1236	1236	1236	1236	1236	1236	1236	1236
10.0	1226	1227	1227	1228	1228	1228	1228	1229	1229	1229
12.5	1216	1217	1218	1219	1219	1220	1221	1221	1222	1222
15.0	1204	1206	1208	1209	1211	1212	1213	1214	1214	1214
17.5	1191	1194	1195	1194	1193	1192	1192	1192	1192	1192
20.0	1175	1173	1171	1170	1170	1169	1169	1169	1169	1170
22.5	1149	1148	1147	1146	1146	1147	1147	1147	1147	1147
25.0	1122	1122	1122	1122	1123	1123	1124	1124	1125	1125
27.5	1095	1096	1096	1098	1099	1100	1101	1102	1102	1103
30.0	1067	1069	1071	1073	1075	1077	1079	1080	1080	1080
32.5	1039	1042	1045	1048	1046	1045	1044	1044	1044	1045
35.0	1010	1014	1012	1010	1009	1008	1008	1008	1008	1009
37.5	977.9	975.0	973.1	972.2	971.7	971.5	972.0	972.0	972.4	972.8
40.0	936.5	934.7	934.1	934.0	934.2	934.7	935.6	936.0	936.5	936.8
42.5	894.8	894.3	894.8	895.7	896.7	897.9	899.2	899.9	900.6	900.8
45.0	853.1	853.7	855.4	857.4	859.3	861.0	862.8	863.9	864.8	864.9
47.5	811.2	813.2	815.8	819.1	818.8	817.7	817.4	817.4	817.8	818.3
50.0	769.1	772.6	772.9	771.7	770.9	770.2	770.2	770.4	770.8	771.2
52.5	727.3	725.3	723.7	723.1	722.9	723.0	723.0	723.4	723.8	724.1
55.0	676.3	675.3	674.6	674.7	675.0	675.3	675.8	676.3	676.8	677.1
57.5	625.5	625.4	625.7	626.3	627.2	627.9	628.6	629.3	629.8	630.0
60.0	575.1	575.9	577.0	578.2	579.4	580.5	581.5	582.3	582.8	582.9
62.5	525.1	526.6	528.4	530.0	530.1	530.2	530.4	530.7	531.0	531.2
65.0	475.5	477.2	477.5	477.8	478.1	478.3	478.7	478.9	479.2	479.4
67.5	424.4	424.9	425.4	425.9	426.2	426.6	426.9	427.1	427.4	427.7
70.0	372.3	372.9	373.6	374.1	374.5	374.8	375.1	375.3	375.7	375.9
72.5	320.7	321.4	321.9	322.5	322.8	323.2	323.4	323.6	323.9	324.1
75.0	269.6	270.2	270.6	271.0	271.3	271.6	271.7	271.9	272.1	272.3
77.5	219.0	219.3	201.3	182.0	165.8	152.9	143.5	137.9	136.1	138.1
80.0	118.5	92.75	69.42	48.97	31.74	18.03	8.069	2.026	0	2.029
82.5	0	0	0	0	0	0	0	0	0	0
85.0	0	0	0	0	0	0	0	0	0	0

C Range: 0 - 360DEG  
 C Interval: 5.0DEG  
 Test Speed: HIGH  
 Temperature: 25.3DEG  
 Operators: DAMIN  
 Test Date: 2023-8-8

γ Range: 0 - 90DEG  
 γ Interval: 0.5DEG  
 Test System: EVERFINE GO-2000A\_V1 SYSTEM V2.0.286  
 Humidity: 65.0%  
 Test Distance: 13.420m [K=1.0000]  
 Remarks: IL-PN195 3.000K

Photometric Data Table [cd]

87.5	0	0	0	0	0	0	0	0	0	0
90.0	0	0	0	0	0	0	0	0	0	0
G/C	100.0	105.0	110.0	115.0	120.0	125.0	130.0	135.0	140.0	145.0
0.0	1258	1258	1258	1258	1258	1258	1258	1258	1258	1258
2.5	1251	1251	1251	1251	1252	1252	1252	1252	1253	1253
5.0	1244	1244	1244	1244	1245	1245	1245	1246	1246	1247
7.5	1236	1236	1237	1237	1237	1237	1237	1237	1238	1238
10.0	1229	1229	1229	1229	1228	1228	1228	1228	1228	1229
12.5	1222	1221	1221	1220	1220	1219	1218	1218	1217	1217
15.0	1214	1213	1212	1211	1210	1209	1207	1206	1205	1204
17.5	1193	1194	1195	1197	1198	1198	1195	1193	1191	1189
20.0	1170	1171	1172	1173	1174	1176	1179	1179	1176	1173
22.5	1148	1148	1148	1149	1150	1151	1153	1156	1160	1155
25.0	1125	1125	1125	1125	1125	1126	1127	1129	1132	1136
27.5	1102	1102	1101	1100	1100	1099	1100	1101	1103	1106
30.0	1080	1078	1077	1075	1074	1073	1072	1072	1073	1075
32.5	1046	1047	1048	1051	1048	1045	1043	1042	1041	1043
35.0	1009	1010	1011	1013	1015	1018	1014	1011	1009	1009
37.5	973.2	973.5	974.1	975.1	976.7	979.0	982.3	979.8	976.3	974.5
40.0	937.0	936.8	937.0	937.2	938.0	939.2	941.3	944.6	942.7	939.2
42.5	900.8	900.2	899.8	899.3	899.2	899.2	900.2	901.8	906.2	903.0
45.0	864.7	863.5	862.6	861.4	860.1	859.0	858.1	858.4	861.6	866.0
47.5	819.3	820.2	822.3	823.5	821.1	819.0	815.7	815.0	816.3	819.7
50.0	771.9	772.6	774.2	776.1	778.4	779.2	773.3	771.5	771.0	772.9
52.5	724.6	725.1	726.0	727.2	728.8	730.3	731.3	727.8	725.6	725.6
55.0	677.3	677.5	677.8	678.4	679.3	679.3	680.6	683.6	680.6	678.3
57.5	630.0	629.9	629.7	629.7	630.0	629.0	629.8	631.5	634.8	631.4
60.0	582.7	582.3	581.7	581.2	580.9	579.5	579.4	580.0	581.7	584.7
62.5	531.6	531.8	532.2	532.5	531.9	530.4	529.4	528.9	529.2	530.8
65.0	479.7	479.9	480.1	480.3	480.7	481.0	479.7	478.1	477.2	477.5
67.5	427.9	428.0	428.2	428.3	428.4	428.4	428.5	427.9	426.0	424.8
70.0	376.1	376.2	376.4	376.4	376.4	376.3	376.0	375.5	375.2	373.3
72.5	324.3	324.5	324.7	324.6	324.5	324.4	324.0	323.4	322.8	322.2
75.0	272.6	272.8	273.0	273.0	272.9	272.9	272.6	272.1	271.5	270.7
77.5	144.0	153.6	166.9	183.5	203.2	221.8	221.6	221.3	221.0	220.5
80.0	8.097	18.11	31.95	49.37	70.09	93.79	120.0	148.3	171.3	171.3
82.5	0	0	0	0	0	0	0	20.12	52.07	85.38
85.0	0	0	0	0	0	0	0	0	0	0
87.5	0	0	0	0	0	0	0	0	0	0
90.0	0	0	0	0	0	0	0	0	0	0
G/C	150.0	155.0	160.0	165.0	170.0	175.0	180.0	185.0	190.0	195.0
0.0	1258	1258	1258	1258	1258	1258	1258	1258	1258	1258
2.5	1254	1254	1255	1255	1256	1256	1257	1256	1256	1255
5.0	1247	1248	1249	1250	1251	1252	1253	1252	1251	1249
7.5	1239	1240	1241	1242	1244	1245	1247	1245	1243	1241
10.0	1229	1230	1231	1232	1234	1236	1238	1236	1233	1231
12.5	1217	1218	1219	1220	1222	1224	1227	1224	1221	1219
15.0	1203	1203	1204	1205	1207	1210	1213	1209	1206	1204
17.5	1188	1187	1187	1188	1190	1193	1197	1192	1189	1186
20.0	1171	1169	1169	1171	1174	1174	1178	1173	1169	1167
22.5	1152	1149	1148	1148	1149	1152	1157	1151	1147	1145
25.0	1131	1127	1125	1124	1125	1128	1133	1127	1123	1121
27.5	1109	1104	1100	1098	1099	1102	1107	1101	1097	1095
30.0	1079	1079	1074	1071	1070	1073	1079	1072	1068	1067
32.5	1046	1051	1045	1041	1040	1042	1048	1041	1038	1038
35.0	1011	1016	1015	1010	1008	1009	1015	1008	1005	1006
37.5	975.1	978.4	983.4	976.2	973.0	974.2	980.2	972.9	970.3	972.2
40.0	937.9	939.4	944.9	941.1	936.6	937.1	943.2	935.7	933.7	936.7
42.5	899.6	899.6	903.4	904.2	898.3	898.1	904.1	896.6	895.4	900.0
45.0	860.6	858.5	860.8	866.2	858.6	857.4	863.3	855.9	855.4	861.5
47.5	821.0	816.6	817.1	823.2	817.2	815.0	820.6	813.4	813.9	818.4
50.0	777.5	774.2	772.2	776.8	773.3	769.6	775.7	768.0	770.1	771.9
52.5	728.2	730.7	726.5	726.7	726.9	723.3	729.8	721.6	723.5	721.7
55.0	678.9	683.2	679.1	677.6	681.3	676.0	682.4	674.3	677.7	672.4
57.5	629.4	631.3	632.7	628.4	633.4	627.1	632.7	625.3	629.9	623.2
60.0	580.4	579.6	583.9	578.7	581.1	577.2	582.2	575.5	577.6	573.4
62.5	531.8	528.4	529.8	528.6	528.4	526.4	530.6	524.7	524.9	523.6
65.0	479.2	477.9	476.3	479.3	475.3	475.1	478.4	473.4	471.9	474.1
67.5	425.1	427.5	424.0	425.6	422.5	423.7	425.8	421.8	419.2	420.7
70.0	372.2	372.7	373.1	371.2	370.0	372.0	371.0	370.4	366.7	366.4
72.5	320.7	319.7	320.8	318.4	319.3	320.6	318.8	319.0	316.1	313.9
75.0	270.0	268.6	267.8	268.6	266.4	267.0	267.4	265.7	264.0	264.7
77.5	219.7	218.8	217.3	216.2	213.7	214.0	216.6	214.4	213.3	213.0

C Range: 0 - 360DEG  
 C Interval: 5.0DEG  
 Test Speed: HIGH  
 Temperature: 25.3DEG  
 Operators: DAMIN  
 Test Date: 2023-8-8

γ Range: 0 - 90DEG  
 γ Interval: 0.5DEG  
 Test System: EVERFINE GO-2000A\_V1 SYSTEM V2.0.286  
 Humidity: 65.0%  
 Test Distance: 13.420m [K=1.0000]  
 Remarks: IL-PN195 3.000K



Photometric Data Table [cd]

80.0	170.8	169.9	168.5	165.8	163.4	160.1	165.7	163.8	164.9	162.5
82.5	119.4	122.8	121.5	118.4	113.1	107.1	112.2	113.0	112.7	114.6
85.0	0	34.70	70.09	74.23	68.47	59.55	59.75	64.93	65.68	70.19
87.5	0	0	0	0	26.70	21.75	14.62	20.55	24.50	0
90.0	0	0	0	0	0	0	0.8326	0	0	0
G/C	200.0	205.0	210.0	215.0	220.0	225.0	230.0	235.0	240.0	245.0
0.0	1258	1258	1258	1258	1258	1258	1258	1258	1258	1258
2.5	1254	1254	1253	1253	1252	1252	1251	1251	1250	1250
5.0	1248	1247	1246	1245	1245	1244	1243	1243	1242	1242
7.5	1240	1238	1237	1236	1235	1235	1234	1234	1234	1233
10.0	1229	1228	1227	1226	1225	1225	1224	1224	1224	1224
12.5	1217	1215	1214	1214	1213	1213	1214	1214	1214	1215
15.0	1202	1200	1200	1200	1200	1201	1202	1203	1204	1205
17.5	1185	1184	1184	1184	1186	1187	1189	1191	1191	1189
20.0	1166	1165	1166	1168	1170	1172	1172	1169	1166	1164
22.5	1144	1145	1147	1149	1153	1149	1146	1143	1141	1140
25.0	1121	1123	1123	1126	1130	1125	1121	1118	1117	1115
27.5	1096	1099	1103	1099	1095	1092	1091	1090	1089	1089
30.0	1069	1073	1073	1068	1064	1063	1062	1062	1063	1064
32.5	1040	1045	1039	1035	1033	1032	1033	1034	1036	1038
35.0	1010	1010	1003	1001	999.9	1001	1003	1006	1002	999.7
37.5	978.0	971.7	967.4	965.4	966.3	968.7	970.0	966.2	963.3	961.4
40.0	939.3	932.5	929.7	929.8	931.9	933.1	928.7	926.0	924.1	922.8
42.5	897.5	892.3	891.0	893.0	894.9	889.6	886.7	885.5	884.7	884.3
45.0	854.8	851.0	851.7	855.6	850.2	846.0	844.2	845.1	845.1	845.8
47.5	810.7	808.8	811.6	809.4	804.6	802.3	801.6	803.6	805.7	807.3
50.0	765.7	765.9	768.0	762.2	759.1	758.5	759.2	761.9	762.7	759.5
52.5	719.8	722.5	718.7	714.7	713.7	714.5	716.9	713.5	712.9	710.4
55.0	672.2	674.8	669.1	667.3	668.3	669.9	666.1	663.3	663.1	661.4
57.5	625.6	622.8	619.7	620.3	622.3	618.0	615.3	613.5	613.2	612.5
60.0	576.9	571.2	570.7	573.6	569.3	566.5	564.8	563.8	563.7	563.7
62.5	523.0	520.1	522.1	519.8	516.9	515.4	514.6	514.6	514.7	514.9
65.0	469.8	469.9	469.7	466.6	465.1	464.6	464.8	465.1	463.8	462.8
67.5	417.6	419.5	415.8	414.2	414.0	414.5	413.8	412.8	411.8	411.0
70.0	367.0	365.0	363.2	362.8	363.2	362.4	361.7	360.9	360.1	359.3
72.5	314.8	312.4	312.0	311.9	311.3	310.7	310.1	309.3	308.5	307.8
75.0	262.2	261.5	261.5	261.0	260.4	259.8	259.0	258.1	257.2	256.4
77.5	212.3	212.0	211.6	211.1	210.3	209.5	208.4	207.2	189.6	171.1
80.0	163.8	163.4	163.1	162.3	161.1	139.0	112.2	87.57	65.39	46.04
82.5	116.5	116.6	112.3	80.23	48.87	18.86	0	0	0	0
85.0	65.52	32.63	0	0	0	0	0	0	0	0
87.5	0	0	0	0	0	0	0	0	0	0
90.0	0	0	0	0	0	0	0	0	0	0
G/C	250.0	255.0	260.0	265.0	270.0	275.0	280.0	285.0	290.0	295.0
0.0	1258	1258	1258	1258	1258	1258	1258	1258	1258	1258
2.5	1250	1250	1250	1250	1250	1249	1249	1250	1250	1250
5.0	1242	1241	1241	1241	1241	1241	1241	1241	1241	1241
7.5	1233	1233	1233	1233	1233	1232	1232	1232	1232	1232
10.0	1224	1224	1224	1224	1224	1224	1224	1223	1223	1223
12.5	1215	1215	1215	1216	1216	1215	1215	1214	1214	1213
15.0	1206	1206	1207	1207	1207	1206	1206	1205	1204	1203
17.5	1187	1186	1185	1184	1184	1183	1184	1184	1185	1186
20.0	1163	1162	1161	1161	1160	1160	1160	1160	1161	1162
22.5	1139	1138	1137	1137	1137	1137	1136	1136	1136	1137
25.0	1114	1114	1114	1114	1113	1113	1113	1112	1112	1112
27.5	1090	1090	1090	1090	1090	1090	1089	1088	1087	1086
30.0	1065	1066	1067	1067	1067	1066	1065	1064	1062	1060
32.5	1035	1033	1032	1031	1030	1030	1030	1031	1032	1035
35.0	997.4	995.8	994.8	993.9	993.4	993.3	993.2	993.6	994.5	996.4
37.5	959.8	958.6	957.9	957.3	956.8	956.6	956.3	956.2	956.6	957.5
40.0	922.1	921.5	921.0	920.6	920.2	919.8	919.2	918.7	918.6	918.6
42.5	884.3	884.3	884.1	884.0	883.6	883.0	882.1	881.3	880.5	879.7
45.0	846.6	847.1	847.2	847.4	847.0	846.2	845.1	843.9	842.3	840.8
47.5	805.6	803.4	801.5	800.3	799.5	799.2	799.3	800.1	801.2	801.8
50.0	757.1	755.3	753.8	752.8	752.1	751.7	751.7	752.1	752.8	754.0
52.5	708.6	707.3	706.1	705.3	704.7	704.2	704.1	704.2	704.5	705.0
55.0	660.2	659.2	658.4	657.8	657.3	656.8	656.5	656.3	656.1	656.2
57.5	611.8	611.2	610.7	610.3	609.8	609.3	608.9	608.4	607.9	607.5
60.0	563.5	563.3	563.1	562.8	562.4	561.9	561.4	560.7	559.8	559.0
62.5	513.7	512.8	512.0	511.3	510.8	510.4	510.3	510.2	510.3	510.4
65.0	461.9	461.0	460.3	459.7	459.2	458.8	458.6	458.4	458.5	458.5
67.5	410.2	409.3	408.6	408.0	407.5	407.1	406.9	406.7	406.7	406.7
70.0	358.5	357.7	357.0	356.4	355.9	355.5	355.3	355.1	355.2	355.1

C Range: 0 - 360DEG  
 C Interval: 5.0DEG  
 Test Speed: HIGH  
 Temperature: 25.3DEG  
 Operators: DAMIN  
 Test Date: 2023-8-8

γ Range: 0 - 90DEG  
 γ Interval: 0.5DEG  
 Test System: EVERFINE GO-2000A\_V1 SYSTEM V2.0.286  
 Humidity: 65.0%  
 Test Distance: 13.420m [K=1.0000]  
 Remarks: IL-PN195 3.000K

Photometric Data Table [cd]

72.5	307.0	306.1	305.4	304.8	304.3	303.9	303.8	303.6	303.7	303.8
75.0	255.5	254.6	253.8	253.1	252.7	252.3	252.2	252.1	252.3	252.5
77.5	155.5	143.0	133.9	128.3	126.3	127.9	133.1	141.6	153.4	168.3
80.0	29.77	16.86	7.529	1.886	0	1.879	7.481	16.69	29.37	45.27
82.5	0	0	0	0	0	0	0	0	0	0
85.0	0	0	0	0	0	0	0	0	0	0
87.5	0	0	0	0	0	0	0	0	0	0
90.0	0	0	0	0	0	0	0	0	0	0
G/C	300.0	305.0	310.0	315.0	320.0	325.0	330.0	335.0	340.0	345.0
0.0	1258	1258	1258	1258	1258	1258	1258	1258	1258	1258
2.5	1250	1250	1251	1251	1251	1252	1252	1253	1253	1254
5.0	1242	1242	1242	1243	1243	1244	1245	1246	1247	1248
7.5	1232	1233	1233	1233	1234	1235	1236	1237	1238	1240
10.0	1223	1222	1223	1223	1223	1223	1224	1225	1227	1229
12.5	1212	1212	1211	1210	1210	1211	1211	1212	1213	1215
15.0	1201	1200	1198	1197	1197	1196	1196	1197	1198	1200
17.5	1188	1187	1185	1183	1181	1180	1179	1179	1180	1182
20.0	1163	1165	1168	1168	1165	1162	1161	1160	1160	1161
22.5	1138	1139	1141	1144	1147	1143	1140	1139	1138	1139
25.0	1112	1112	1113	1115	1118	1123	1118	1116	1114	1114
27.5	1086	1085	1085	1086	1088	1092	1095	1091	1088	1088
30.0	1059	1057	1056	1056	1057	1060	1064	1064	1060	1059
32.5	1032	1029	1027	1026	1025	1027	1030	1036	1031	1028
35.0	998.4	1001	997.3	994.5	992.7	992.5	994.5	999.2	999.5	995.8
37.5	959.0	961.2	964.9	962.6	959.2	957.4	958.0	961.2	966.6	961.5
40.0	919.1	920.4	923.0	927.0	925.1	921.6	920.4	922.2	927.5	925.2
42.5	879.2	879.5	880.8	883.5	888.2	885.1	882.1	882.0	885.8	887.5
45.0	839.2	838.4	838.4	839.7	843.1	848.1	843.0	840.9	842.8	848.3
47.5	799.2	797.4	796.0	795.8	797.4	801.8	803.4	798.3	797.9	804.5
50.0	755.8	756.2	753.5	751.8	751.8	754.2	759.3	753.8	752.5	757.2
52.5	706.2	708.3	711.0	707.8	706.1	706.7	707.9	710.2	706.5	709.4
55.0	656.8	658.1	660.0	662.9	660.2	658.3	658.2	662.8	660.1	660.4
57.5	607.6	608.0	608.9	610.8	614.2	610.8	609.2	611.3	613.4	610.9
60.0	558.5	558.2	558.4	559.2	561.1	564.2	560.4	560.2	564.8	561.2
62.5	509.6	508.7	508.1	507.9	508.8	511.0	512.2	509.5	511.3	511.4
65.0	458.7	459.1	458.3	457.5	457.2	458.0	460.6	459.6	458.4	462.1
67.5	406.8	407.0	407.4	407.5	406.4	406.1	407.1	409.9	406.1	409.1
70.0	355.3	355.4	355.5	355.7	356.1	355.2	354.8	355.6	355.7	355.3
72.5	303.9	304.1	304.2	304.4	304.6	304.8	304.2	303.2	304.2	303.3
75.0	252.9	253.2	253.4	253.7	253.9	254.1	254.2	253.4	252.8	253.8
77.5	185.9	202.6	203.1	203.7	204.2	204.5	204.6	204.7	203.9	203.2
80.0	64.13	85.59	109.2	134.6	155.2	156.0	156.5	156.6	156.5	154.4
82.5	0	0	0	18.25	47.03	76.66	106.4	110.1	109.9	107.8
85.0	0	0	0	0	0	0	0	30.52	60.29	64.27
87.5	0	0	0	0	0	0	0	0	0	0
90.0	0	0	0	0	0	0	0	0	0	0
G/C	350.0	355.0								
0.0	1258	1258								
2.5	1255	1255								
5.0	1249	1251								
7.5	1241	1243								
10.0	1231	1233								
12.5	1218	1220								
15.0	1202	1205								
17.5	1184	1188								
20.0	1164	1168								
22.5	1141	1146								
25.0	1117	1121								
27.5	1090	1094								
30.0	1060	1065								
32.5	1029	1033								
35.0	995.7	999.6								
37.5	960.3	963.8								
40.0	923.1	926.3								
42.5	884.1	886.7								
45.0	843.6	845.3								
47.5	801.2	802.4								
50.0	757.6	757.0								
52.5	711.7	709.0								
55.0	665.4	661.4								
57.5	617.7	612.8								
60.0	565.3	562.9								
62.5	512.6	512.2								

C Range: 0 - 360DEG  
 C Interval: 5.0DEG  
 Test Speed: HIGH  
 Temperature: 25.3DEG  
 Operators: DAMIN  
 Test Date: 2023-8-8

γ Range: 0 - 90DEG  
 γ Interval: 0.5DEG  
 Test System: EVERFINE GO-2000A\_V1 SYSTEM V2.0.286  
 Humidity: 65.0%  
 Test Distance: 13.420m [K=1.0000]  
 Remarks: IL-PN195 3.000K

## Photometric Data Table [cd]

65.0	459.9	461.1
67.5	407.7	409.6
70.0	356.0	357.3
72.5	306.2	306.2
75.0	254.2	253.8
77.5	203.3	203.5
80.0	154.9	154.5
82.5	104.8	104.9
85.0	59.84	56.54
87.5	20.13	15.85
90.0	0	0

C Range: 0 - 360DEG  
C Interval: 5.0DEG  
Test Speed: HIGH  
Temperature:25.3DEG  
Operators:DAMIN  
Test Date:2023-8-8

$\gamma$  Range: 0 - 90DEG  
 $\gamma$  Interval: 0.5DEG  
Test System:EVERFINE GO-2000A\_V1 SYSTEM V2.0.286  
Humidity:65.0%  
Test Distance:13.420m [K=1.0000]  
Remarks: IL-PN195 3.000K